

LOADPASS

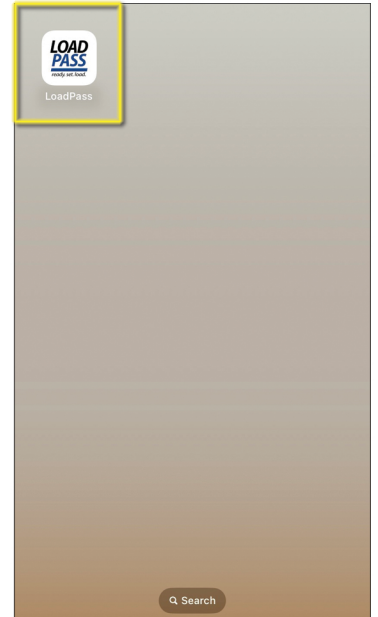
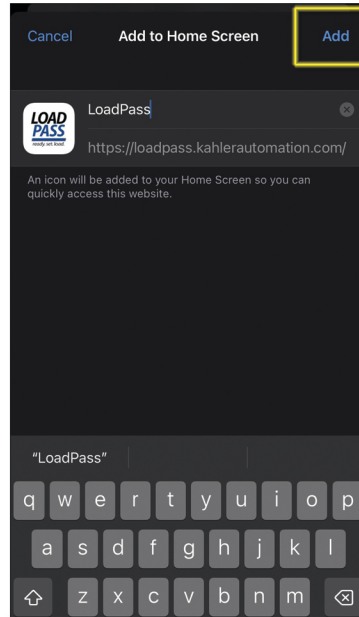
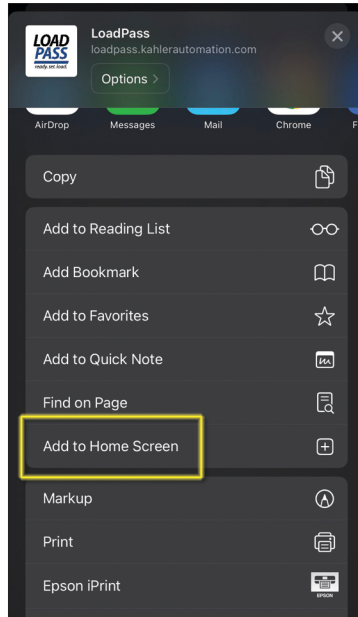
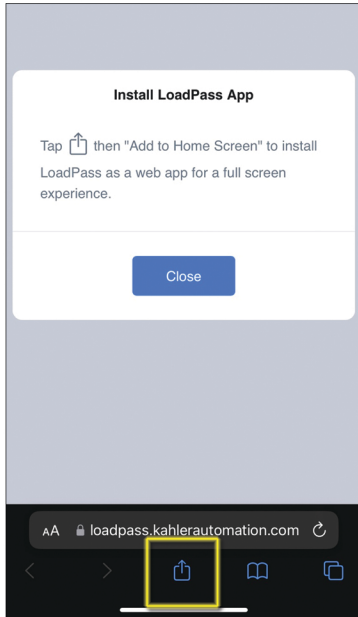
ready. set. load.



Thank you for choosing LOADPASS. These step-by-step instructions will help you get started using the app on your mobile device.

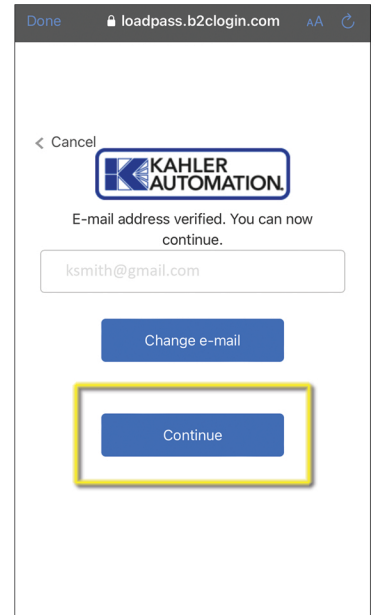
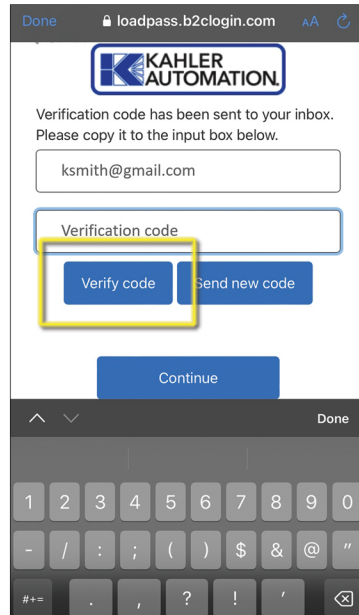
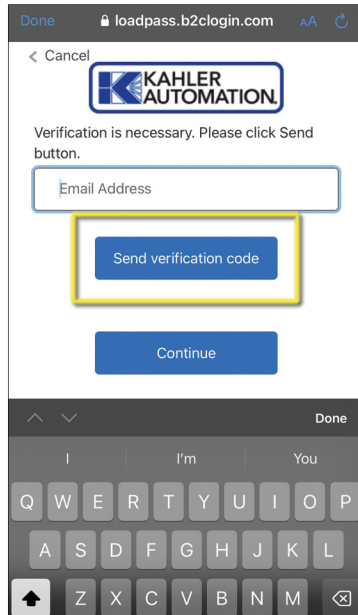
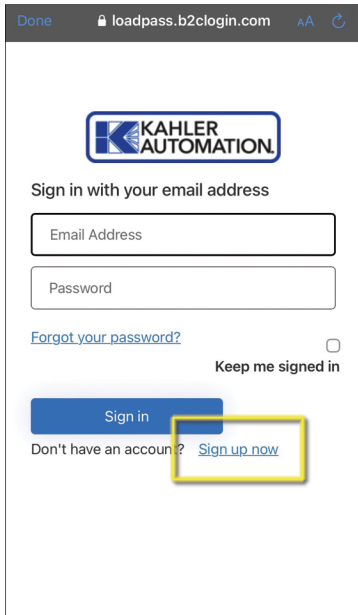
1. SET UP

- **Scan** the QR code above with your phone or click: <https://loadpass.kahlerautomation.com/>
- **Follow** the on-screen instructions to install LOADPASS on your device
- **Tap** the LOADPASS icon to open the app



2. SIGN UP

- **Click** "Sign up now" to create a free account
- **Enter** your email address & click "Send verification code"
- **Check** your email for code; enter that code and click "Verify code"
- **Complete** your sign-up by clicking "Continue"



LOADPASS

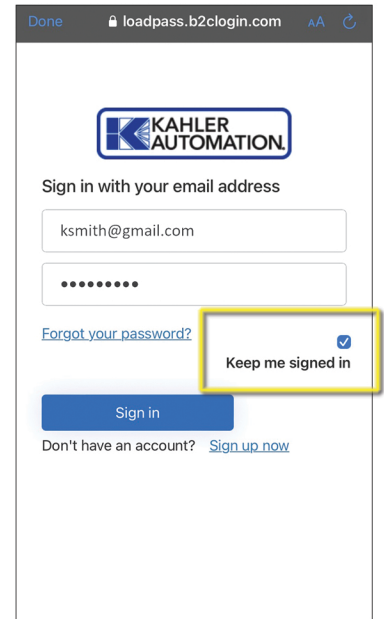
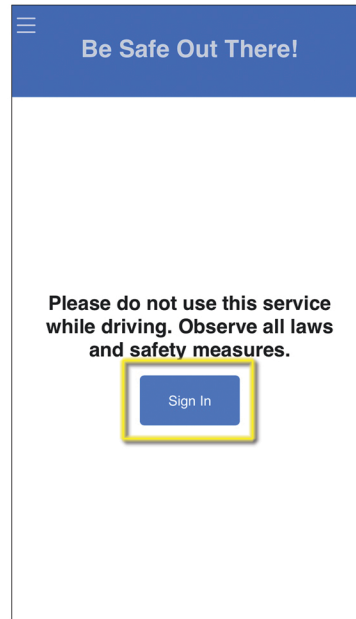
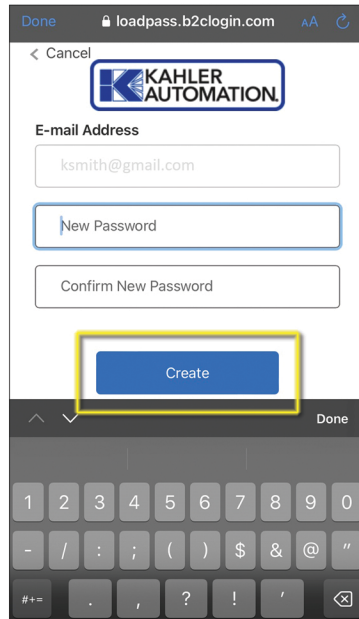
ready. set. load.



Thank you for choosing LOADPASS. These step-by-step instructions will help you get started using the app on your mobile device.

3. SIGN IN

- **Set** your password & click "Create"
- **Sign** in using your email address and password
- **Check** the "Keep me signed in" box to avoid having to sign in next time.



4. CHECK IN

Before arriving on-site to pick up a load...

- **Open** LOADPASS
- **Enter** the required info; when the barcode appears on-screen, you're checked in!
- **Present** your phone's barcode to the scanner when you arrive on-site & follow directions

